

Allegato alla delibera G.C.n.° 26 del 10/05/2022

COMUNE DI USSASSAI

Provincia di Nuoro

PROGETTO DEFINITIVO-ESECUTIVO

MESSA IN SICUREZZA DEL PATRIMONIO COMUNALE
ABBATTIMENTO DELLE BARRIERE ARCHITETTONICHE
SISTEMAZIONE PIAZZA SAN LORENZO - D.M. DEL 18-01-2022
PROGETTO DI COMPLETAMENTO

COROGRAFIA - AEROFOTOGRAMETRIA - PLANIMETRIE VARIE.

Data: Maggio 2022

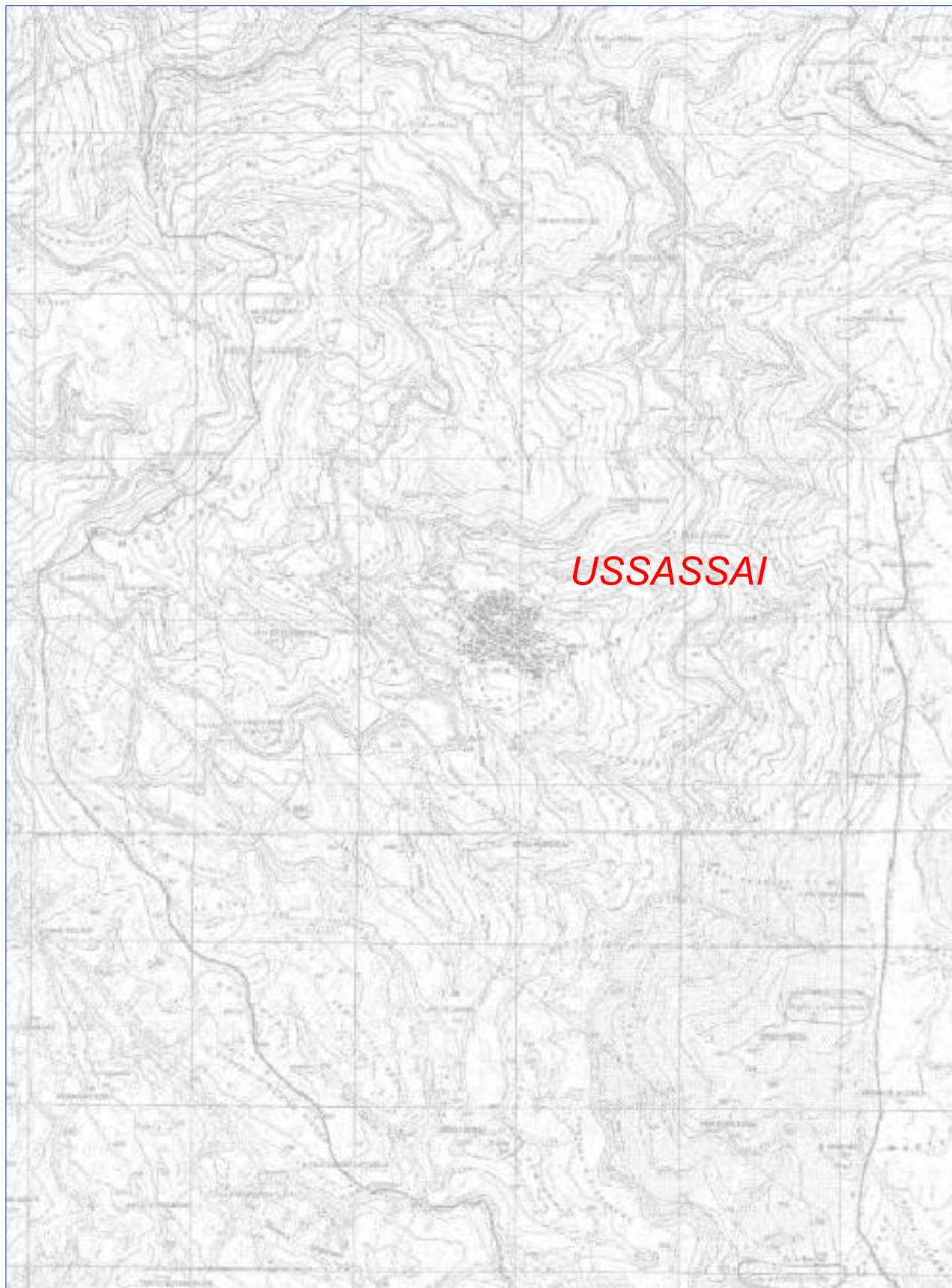
TAV. 01

L'Amministrazione Comunale

Il Responsabile Del Servizio Tecnico
Ing. Flavia Marci

COROGRAFIA

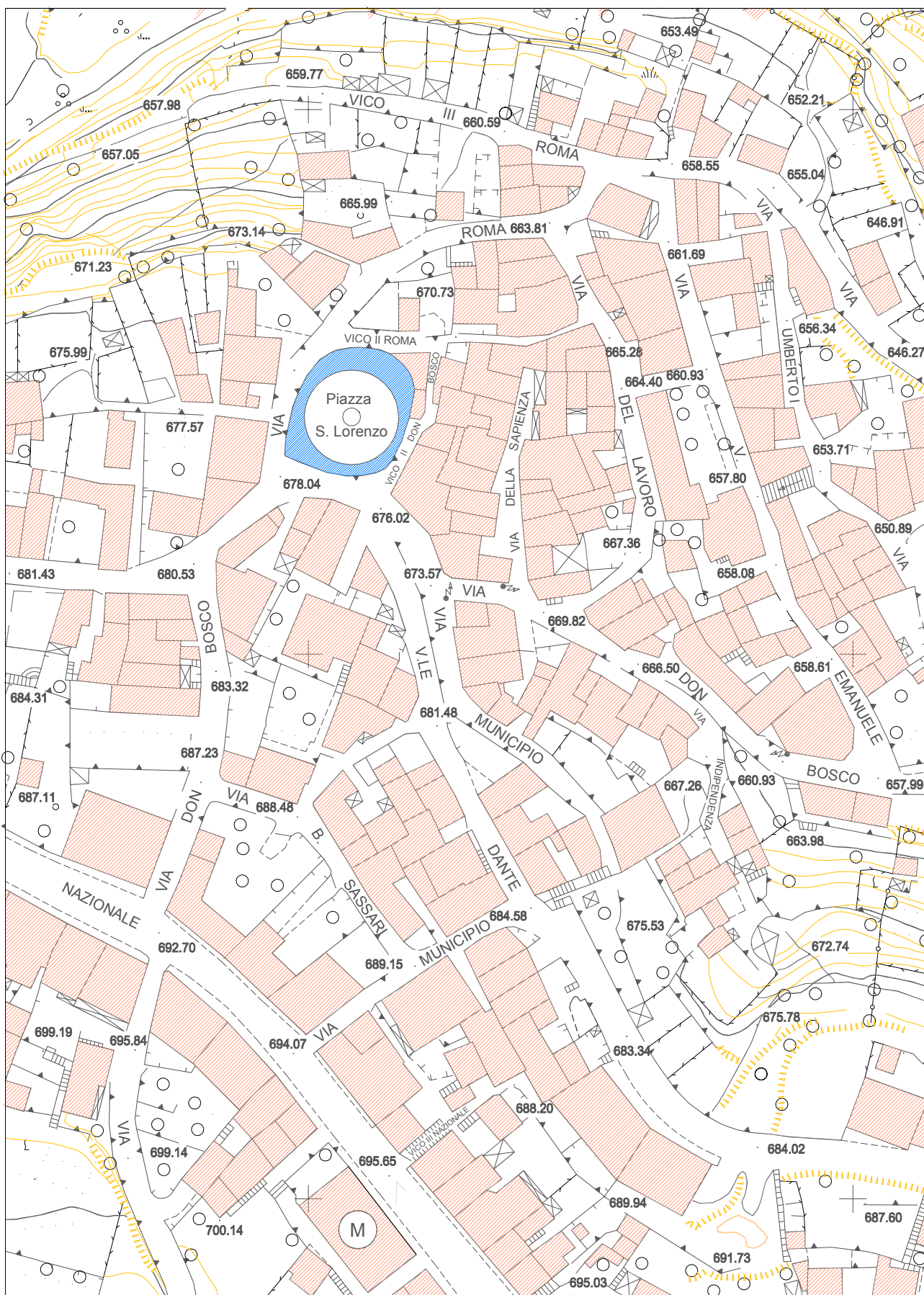
SCALA 1: 25.000



SCALA 1: 10.000

This is a detailed topographic map of the area around Ussassai, Sardinia. The map features yellow contour lines indicating elevation, with major contours at 500, 600, 700, and 800 meters. The town of Ussassai is centrally located, with its name written in large red letters. Surrounding the town are several smaller settlements and landmarks, including Fonte S'Impresa, C. se Orgiolas, S'INEVURU, SUERGERA, CRABAORTIA, NESTASI, and Genna Tasonis. The map also shows the Riu Lacassei and the C. Mara Ciyargiu. Various roads are marked, including the Strada and the C. Mara Ciyargiu. The map includes numerous elevation points and labels for specific locations such as Com.le Bau Ericci, Perda, and Ponte Bau Ericci. The overall terrain is hilly, with Ussassai situated in a valley.

SCALA 1: 1.000



STRALCIO AEROFOTOGRAMMETRIA

SCALA 1: 250



VISTA AEREA

SCALA 1: 2.000



Area d'intervento

