

PLANIMETRIA GENERALE DELL'INTERO LOTTO
SCALA 1/500

COMUNE DI USSASSAI
(Provincia Ogliastra)

PROPOSTA PROGETTUALE
PROGETTO PER LA REALIZZAZIONE DI UN LOCALE
DESTINATO A DEPOSITO ATTREZZI UTILIZZATO
PER L'ATTIVITA' AGRICOLA, UBICATO IN LOCALITA' "USELIGIS"
RICADENTE NEL F.16 PART. 42

ELABORATO
PLANIMETRIA GENERALE,PIANTE, PROSPETTI, SEZIONI,
PARTICOLARI COSTRUTTIVI.

TAVOLA
2

SCALA
VARIE

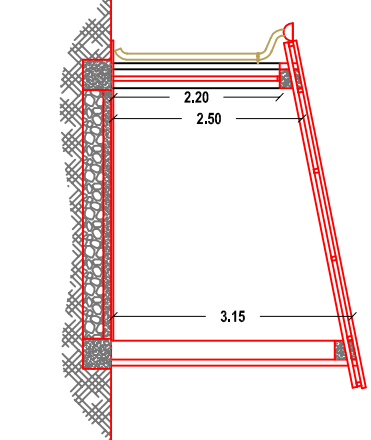
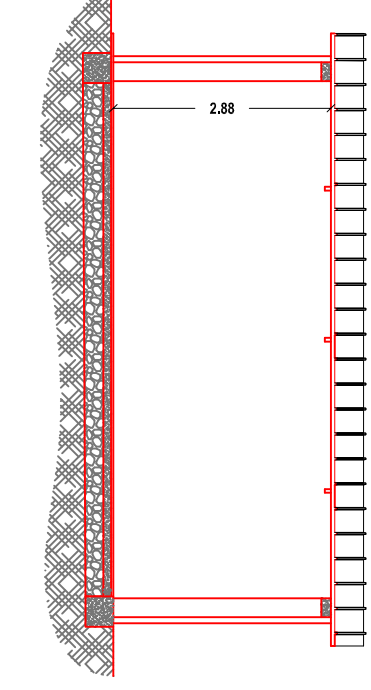
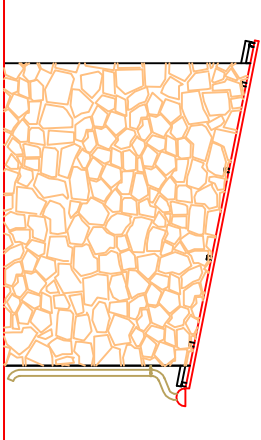
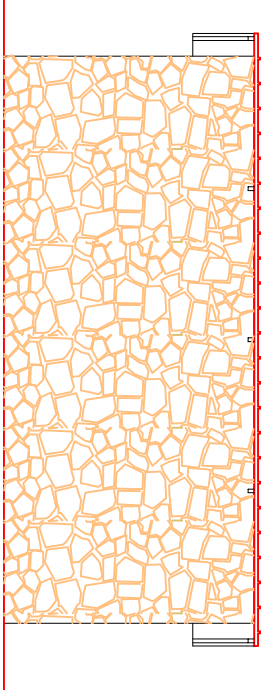
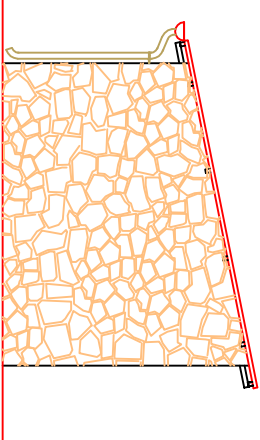
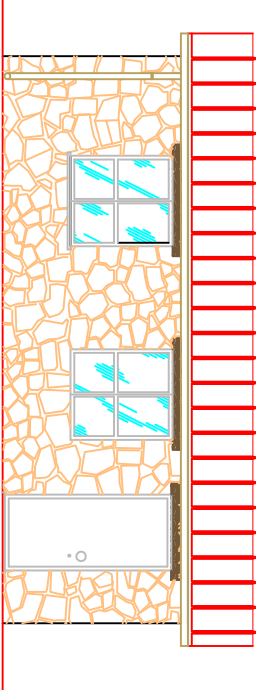
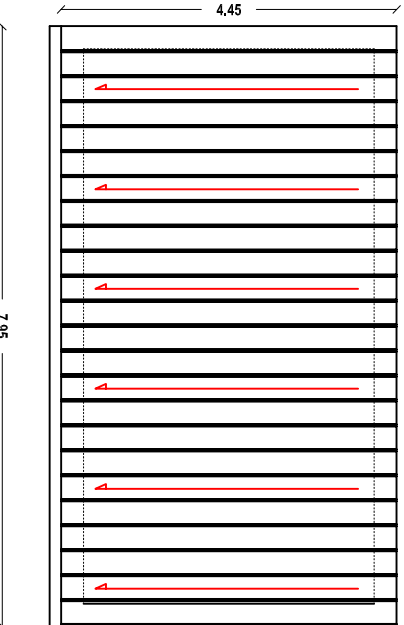
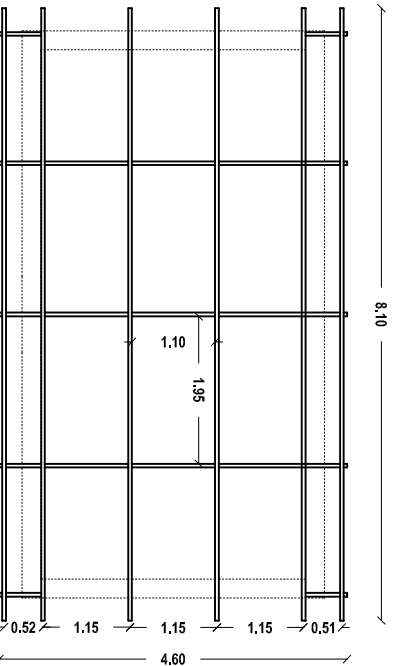
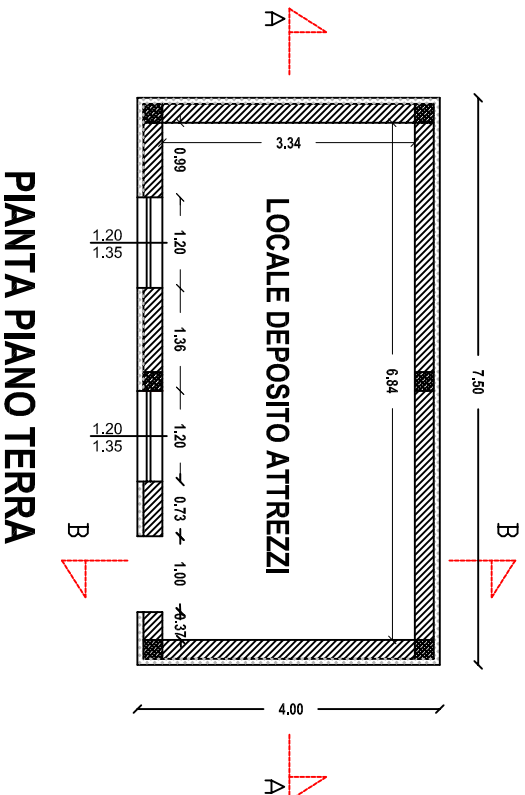
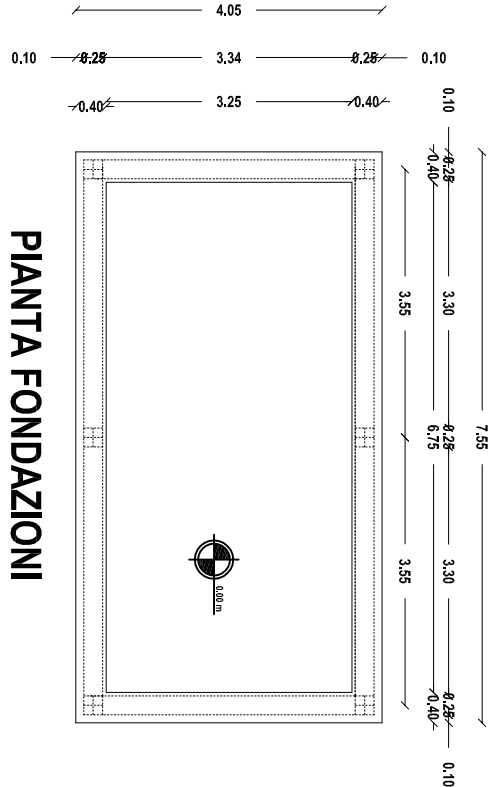
DATA
Giugno 2013

COMMITTENTE
Sig. Pes Nicola

PROGETTISTA
DOCT. ING. VINCENZO PINNA

VISTO:

PIANTE-PROSPETTI, SEZIONI
SCALA 1/100



PARTICOLARI COSTRUTTIVI

CHIUSURE DI COPERTURA, DI BASE,
ELEMENTI VERTICALI
SCALA 1/50
SEZIONE VERTICALE

